



# MOUNT WASHINGTON NEWSLETTER

MOUNT WASHINGTON IMPROVEMENT ASSOCIATION

Winter 2007

## Message From the President

Dear neighbors,

Communication is very important in our community of 1600+ homes. For a long time, this newsletter has been the sole source of communication and it has worked well given its limitations of timeliness and cost. In the recent past we have tried to communicate electronically with mixed results. You may remember the Crime Stats and General Announcement email listservs. Each listserv had good intentions but due to a combination of factors – both human and technical competencies – the communications were inconsistent and ultimately discontinued.

Resurrecting electronic communications in an organized and participatory fashion is the logical next step. The 2005/2006 neighborhood survey indicated that the vast majority of Mt. Washingtonians have access to the internet and use email. There are no plans to discontinue the newsletter, but it can be supplemented with more timely and cost effective communications tools.

So here are three ways that you can interact electronically with your community. Please choose at least one and take just a moment to sign up. I'm sure it will be worth your effort:

### **MWIA Announcements – important and timely information straight to your email**

The MWIA has a new email announcement service to send out brief notices of community meetings or events, the monthly crime stats, and information on issues in the neighborhood. We promise to send only the most important information and to keep our postings brief. If you live in Mt. Washington, this is a MUST. You can view the

announcements at <http://groups.google.com/group/mwia-announcements> or click on “join” to have the announcements sent to your e-mail. Or simply go to the MWIA website ([www.mwia.org](http://www.mwia.org)) and click on the link to subscribe to the announcements list.

### **Informal Neighborhood Discussion Board – a listserv of general interest to the community**

A Mt. Washington neighborhood chat group was started in the spring of 2006. This is a lively discussion board where all participants can post their views and neighbors can share information. Recent discussions included recommendations for painters and contractors, a discussion of daycare options, information on leaf removal, slate roofs, lost dogs and a variety of other topics. It's informative, a great way to (electronically) meet your neighbors and a lot of fun. To subscribe, use the link at [www.mwia.org](http://www.mwia.org) or go to <http://groups.google.com/group/Mount-Washington>. Please note that this is an opinion board and does not necessarily reflect the positions taken by the MWIA

### **MWIA official website – [www.mwia.org](http://www.mwia.org).**

Not only will you find the subscription links, but there is also a community calendar, information about our neighborhood, and links to city agencies.

We've tried to round up the email addresses of those who've subscribed to various lists in the past, and hopefully you are already getting our announcement emails. If you are not, then we don't know how to reach you and you're missing out. Please take a moment to go to [www.mwia.org](http://www.mwia.org) to subscribe. I think you'll find it worthwhile.

*Mac Nachlas*  
[president@mwia.org](mailto:president@mwia.org)

# Slots Debate: Over, or Just Getting Started?

By Aaron Meisner

*Aaron Meisner is a neighbor, a member of the MWIA Board, and a community activist working against slot machines in Maryland. The opinions expressed below are Aaron's and are not sanctioned by the MWIA.*

When Martin O'Malley campaigned for Governor, he rarely spoke about slot machine gambling. When pressed, he would confess that in order to save racing related jobs, he would support "limited slots at the racetracks." Depending on your point of view, this could have meant several different things.

For the racing industry, this talk represented hope that their ship (riverboat?) was finally going to come in. Regardless of who won in November, there would be a supporter in Annapolis, and perhaps O'Malley would be able to succeed where Ehrlich failed four times running.

Slots opponents like me felt that O'Malley was nominally supporting slots in order to take the issue off the table. After all, a little less than half of voters polled support slots, and it was clear from the outset that a close election was in the works and no votes could be spared. But it seemed as if O'Malley's support was tepid. He certainly didn't share Ehrlich's single-minded passion for gambling.

Now that the election is settled, I see little to indicate that slots have much of a chance in the 2007 legislative session, nor in 2008 and beyond. My thinking is based on a few different factors. The first is Lieutenant Governor Anthony Brown. As a delegate, Brown was extremely close to slots opponent House Speaker Michael Busch. Brown was actively involved in fighting gambling legislation in Annapolis before being deployed to Iraq. His new role will give him significant responsibility for shepherding the O'Malley agenda through the legislature. Don't look for Brown to be leading a bloody fight for slot machines.

The next factor is House Speaker Michael Busch himself. He is at the height of his power, and his opinions on gambling are personal and deeply held. While some cynics have speculated that Busch will yield to a new Democratic Governor on slots, I see this as highly unlikely. Busch is viewed with near-heroic respect by many Annapolis Democrats who feel that he stood up to Governor Ehrlich with great courage and masterful political maneuvering.

The November elections also swept in a new crop of legislators on record as opposing gambling expansion. Meanwhile, several key proponents are gone, having lost their re-election bids, retired, or unsuccessfully bid for higher offices. Most people have forgotten that Republicans traditionally opposed gambling until the appearance of Mr. Ehrlich. Many will happily return to their original positions—the same positions held by large numbers of their conservative rural constituents.

Given this backdrop, what chance do slots really have? But let's not be too hasty. There are some factors still favoring slots. Senate President Mike Miller, himself the beneficiary of plenty of gambling-related campaign contributions, is still a rabid slots backer. Given the Structural Deficit (the State has needs that outstrip expected revenues for 2009-2010) and O'Malley's potentially expensive agenda, it is possible that the gambling debate may be re-ignited. The national gambling lobby is unlikely to walk away from the \$6 million they spent in Annapolis over the last four years. Slots have been compared to snow in Annapolis: everywhere in February, but gone by April. Time will tell if this holds true under Governor O'Malley.

---

## Twilight Racing at Pimlico

As you read this, the Maryland General Assembly is probably considering changes to the law that will facilitate "twilight" racing at Pimlico. We sat down last December with Delegate Sandy Rosenberg who explained the following:

Due to old agreements between the thoroughbred and standardbred factions, thoroughbreds have not run after dark in Maryland for many years. But after a compromise reached last year between various racing organizations, Laurel Racecourse tested twilight racing for several weeks with good results.

The MWIA is working with other surrounding neighborhoods to formulate legislation to minimize the impact of twilight racing. Our traditional position has been to support the track in ventures that will help it be viable as a racetrack, so long as impact on the community is recognized, minimized, or compensated. For twilight racing we are concerned that the lighting of the track and parking lots be done in such a way as to minimize the impact on our neighborhood, that extra security be provided when the track is open, and that there be strict rules on how late the track may operate, with penalties for running over.

The MWIA's Pimlico Committee will be following this and other issues closely. If you are concerned about how the future of Pimlico might impact our neighborhood, please volunteer by sending a note to [President@MWIA.org](mailto:President@MWIA.org).



### *Call for content*

The newsletter is published by the Mt. Washington Improvement Association (MWIA) and is mailed to the homes of residents three times a year. The newsletter informs the residents about people, activities, and services in Mt. Washington and the actions of the Board of Directors. The newsletter accepts news, information, and suggestions.

The deadline for the spring issue is March 15th (May publication). Contact Jill Feinberg, editor: [jbfeinberg@comcast.net](mailto:jbfeinberg@comcast.net) or 410-466-9225.

# Board of Directors

## Directors

President: Mac Nachlas	410-542-8766
Vice President: Rebecca Bainum	410-664-7159
Secretary: Maggie Kunz	410-664-9466
Treasurer: Leslie Sporn-Symonds	410-542-1892

## Board

Taliya Adelstein	410-367-4539
Stuart Caplan	410-367-4907
David Conn	410-466-8462
Denise Duval	410-664-7893
Jill Feinberg	410-466-9225
Cindy Freeman	410-664-7774
George Lewis	410-664-2760
Shea Lyda	410-664-6516
Linda Panlilio	410-367-3802
Lu Pierson	410-664-0055
Salem Reiner	410-664-2349
Sally Staugitis	410-664-2212
Trent Zivkovich	410-542-5147

## Honorary Directors

Jan Franz	410-664-5254
John Mack	410-466-3824
Cliff Mitchell	410-466-0529

## Area Director

Aaron Meisner	410-664-0707
---------------	--------------

## Area Captains

1. Brent Flickinger	410-367-1777
2. Liz Hopkins	410-542-0927
3. Ira Kolman	410-664-5078
4. Roberta Strickler	410-367-8666
5. Carol Berkower	410-466-8699
6. Eric Seaberg	410-466-1548
7. Stephanie Reginold	410-542-3999

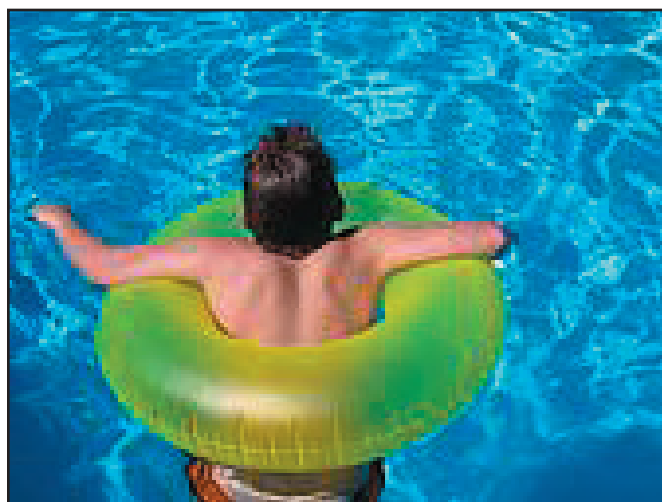
# Mt. Washington Swimming Club Welcomes New Members

New to Mt. Washington? Looking to join a swim club? One of the jewels of our neighborhood is the Mt. Washington Swimming Club located at 2300 Enslow Road. Surrounded by trees in a country-like setting, the Swimming Club currently has openings available.

If you are not a member, now is a great time to join. The pool is the perfect place to meet neighbors, get together with friends, or just relax during the summer months. The Swimming Club is located just off of Greenspring Avenue near Northern Parkway, and there is a convenient walking/bike path to the pool from Rogers Avenue at the top of Cross Country Boulevard.

This year the pool will open for the season on Saturday, May 26. The Club features a large new swimming pool with general swim areas, lap lanes, diving board, and a special play section for “sharks and minnows.” Amenities include a separate children’s pool with fountains, playground, basketball court, ping-pong tables, volleyball net, picnic tables, and lounge chairs. Private swim lessons are available and a “Penguin Club” is offered for members who like to swim their laps in the early morning. Many members enjoy picnics at the pool, and our local take-out restaurants deliver to the Club.

If you are a member, please help spread the word to those who are new to the neighborhood. For more information or a brochure, please contact Amy Noji, Secretary, at 410-542-8487 or email [swimmw@yahoo.com](mailto:swimmw@yahoo.com). The Club is a non-profit, membership-owned corporation.



## Want more neighborhood news?

- Go to the MWIA website at [www.mwia.org](http://www.mwia.org)
- To receive email updates from MWIA, visit [www.mwia.org](http://www.mwia.org) and click on “email sign up.”
- Join the neighborhood chat by writing to [mount-washington@googlegroups.com](mailto:mount-washington@googlegroups.com)
- Check local opinion at [www.21209.org](http://www.21209.org)

# Calendar

## Ongoing

Every Thursday from January until May, 10:00 –11:00 a.m.  
Nature Story Hour, Cylburn Arboretum, 4915 Greenspring Ave.  
Children ages 3 to 6 are invited to hear about the natural world around us. Learn about insects, trees, flowers, birds and other wildlife in an informal setting just for pre-school age children.  
Weather permitting, a guided nature walk will follow story hour.  
410-367-2217

### January 13 – Feb 25

100 Teapots 3, Baltimore Clayworks, 5707 Smith Ave.  
Third national juried exhibition of teapots  
410-578-1919

## February

### February 10, 10:00 a.m. – 3:00 p.m.

Draw In!, Cylburn Arboretum, 4915 Greenspring Ave.  
All level adult artists are welcome to join our artists and explore nature in detail. Professional artists will be available to answer questions and give advice on drawing from our nature collections.  
410-367-2217

**February 10, 10 a.m. (story hour); 11 a.m. – noon** (Tour of the Nature Museum)  
Children's Story Hour, Cylburn Arboretum, 4915 Greenspring Ave. Cylburn Arboretum Association and Becky Thomson of the Village Learning Place are partnering for our Cylburn Story Hour, which will take place in the Nature Museum at the Carriage House. Join us for a children's story reading by Ms. Thomson. Then, volunteers from the Baltimore Bird Club will be available to give a tour of the Nature Museum at Cylburn.  
410-367-2217

### February 10, 10:00 a.m. -- noon

Drop-In Crafts, Cylburn Arboretum Mansion  
Two nature craft projects will be available for children and their accompanying adult at this drop-in session in the Mansion. This workshop is offered to children between the ages of 5 and 10. Cylburn's volunteers will guide the young - and the young at heart - in creating wonderful take home crafts, such as pressed flower bookmarks, terrariums, and more.  
410-367-2217

### February 11, 2:00 – 4:00 p.m.

History Tour of Cylburn Mansion, Cylburn Arboretum, 4915 Greenspring Ave.  
Join us for Cylburn's history tours and hear about the extravagant dinners and parties that took place in this historic dwelling. Visit the first floor of the Tyson family's luxurious post-Civil War Mansion, with a mansard roof, a tower, and a cupola of Italianate design.  
410-367-2217

### February 17, 6:30 p.m.

Mt. Washington Elementary School Father/Daughter Dance, 1801 Sulgrave  
410-396-6354

### February 18, 6 p.m.

Mardi Gras Celebration, St. John's Episcopal Church, 1702 South Road  
Join neighbors for traditional New Orleans food, irreverent music and the crowning of the Mardi Gras king and queen.  
410-367-7287

### February 20, 7:30 p.m.

MWIA Open Board Meeting  
Location TBD

## March

**March 10, 10 a.m.** (story hour); **11 a.m. – noon** (tour of the Nature Museum)  
Children's Story Hour, Cylburn Arboretum, 4915 Greenspring Ave. Cylburn Arboretum Association and Becky Thomson of the Village Learning Place are partnering for our Cylburn Story Hour, which will take place in the Nature Museum at the Carriage House. Join us for a children's story reading by Ms. Thomson. Then, volunteers from the Baltimore Bird Club will be available to give a tour of the Nature Museum at Cylburn.  
410-367-2217

### March 11, 2:00 – 4:00 p.m.

Plant Workshop, Cylburn Arboretum, 4915 Greenspring Ave.  
Horticultural educational demonstration on propagation with seeds and cuttings. Learn about propagation using houseplants and outdoor plant materials.  
410-367-2217

### March 30, 5:30 p.m.

Mt. Washington Elementary School Mother/Son Bowling  
410-396-6354

### March 31, 6:30 p.m.

Baltimore City College's Knight Moves: Silent and Live Auction, 3220 The Alameda  
Come and play with other parents and alum at City's auction and help support this historic Baltimore City school. Please contact Sarah Wolfenden for event information (or to volunteer).  
410-323-1467

## April

### April 7, 11:00 a.m. -- 8:00 p.m.

Inner Harbor Easter Celebration, Inner Harbor Amphitheater, 201 South Light Street.  
A day of family entertainment with street performers, the Easter Bunny and more.

**April 14, 10 a.m.** (story hour); **11 a.m. – noon** (tour of the Nature Museum)

Children's Story Hour, Cylburn Arboretum, 4915 Greenspring Ave. Cylburn Arboretum Association and Becky Thomson of the Village

Learning Place are partnering for our Cylburn Story Hour, which will take place in the Nature Museum at the Carriage House. Join us for a children's story reading by Ms. Thomson. Then, volunteers from the Baltimore Bird Club will be available to give a tour of the Nature Museum at Cylburn.  
410-367-2217

**April 15, 2:00 – 4:00 p.m.**

Plant Workshop, Cylburn Arboretum, 4915 Greenspring Ave.  
Educational workshop on pruning. Learn basic techniques at a hands-on practice session and take some materials home with you.  
410-367-2217

**April 17, 7:30 p.m.**

MWIA open board meeting  
Location TBD

**April 27, 7 p.m.**

Mt. Washington Elementary School Father/Son Game Night, 1801 Sulgrave Ave.  
410-396-6354

---

## Parking Tickets Surprise Neighbors

One morning last August, several Mt. Washingtonians awoke to trouble; their cars had been ticketed for “parking against the traffic flow.”

“But we always park against the flow!! We park on our side of the street!! It makes no sense!” our neighbors screamed. “It’s still the law,” the City responded.

Of course both sides are right. The tradition of parking opposite traffic flow (facing the wrong way on the other side of the street) has been the norm in Mt. Washington for many years without any problems. But it is also true that this practice is against the law and subject to ticketing. The Department of Transportation says this is an area of concern and one on which they plan to focus in the future.

After a few calls and e-mails by both the MWIA and many of the impacted citizens, the City agreed to stop issuing tickets until the community at large was notified of the issue and given fair warning. To that end, the City provided us with brochures to remind us of City parking regulations. Volunteers will distribute them when the weather warms a little, but for now remember-

You may be ticketed if you:

- Park in a “No Stopping” zone
- Double park
- Park in a pedestrian crosswalk
- Park on the sidewalk
- Park in a Loading Zone
- Park in a space designated “Disabled” without a valid tag
- Park at an expired meter
- Park within 15 feet of a fire hydrant and
- Park against the flow of traffic.

Many of those who received tickets will soon be going to court, but we won't know the outcome in time for this newsletter. I'm sure

many citizens may object to a “no-tolerance” parking policy in Mt. Washington and will let our elected Representatives know how they feel. (Send email to: [bridges\\_tony@hotmail.com](mailto:bridges_tony@hotmail.com) and [RSpector@baltimorecitycouncil.com](mailto:RSpector@baltimorecitycouncil.com))

But for now, we have been given fair warning. The City may, at any time, ticket us for any of the offenses listed above. So please watch how you park and mind the list.

---

## Neighborhood Listserv Keeps Us Informed

Last March a listserv was started for all neighbors in Mt. Washington. The goal was to have an informal forum – an electronic bulletin board, really – where any member could post a message with questions or news relevant to the neighborhood. As of December, we had slightly over 200 members and were averaging about 150 messages a month.

In its brief existence, the listserv has accomplished the following:

- Helped find homes for new residents, and tenants for old homes.
- Served as a resource for seeking and sharing recommendations on home contractors.
- Provided timely information on MWIA and MWES meetings and other events, yard sales, stream cleanups, weekly gardening, Christmas tree lighting, a series of meet-the-candidate garden parties, and other activities around the neighborhood.
- Arranged neighbor-to-neighbor loans of a tiller and a brand-spanking-new toddler's car seat. (Thanks, Aaron!)
- Reunited a lost parrot with its family.
- Offered a proven method for surviving the Preakness. (Actually, two methods. The expert solution requires vodka, rum, and Cointreau, but in a pinch, bourbon seems to do the trick.)
- Alerted neighbors of local crime reports.
- Helped to find house-, baby-, and pet-sitters, and to connect parents of toddlers for a playgroup.

Through all these individual messages and conversations, the listserv is helping neighbors to build community. So if you haven't joined the listserv yet, what are you waiting for?

Go to <http://groups.google.com/group/Mount-Washington> and click on “Join this group”. You will be given several options for how you would like to receive messages and asked for your name and address. (The latter is a screen to ensure that group members really do reside in the area, or at least can name a street here. Only members will be able to read postings.) It won't take more than a minute or two to complete, and you should receive a notification of membership shortly thereafter, along with an address for posting messages. Note that all postings, including replies, will be sent to all group members. If you have any other questions, contact Carol Berkower, listserv manager at [cberkower@gmail.com](mailto:cberkower@gmail.com) or 410-466-8699. Carol will be out of town the first part of February and will return your message when she returns.

# Keep Mt. Washington Green



Mt. Washington is known for its wooded peacefulness and country-like setting. This is largely due to its beautiful landscaping and trees. But did you know that many neighborhoods in the northeast, including ours, are losing trees an alarming rate? How often do you open the window or walk out the door and hear the roar of a wood chipper or the buzz of a chainsaw? As older, majestic trees die off, we're left with sunny lawns with few trees to regenerate the spectacular wooded spaces that make our community so unique and beautiful.

You can create the next generation of oaks, maples, tulip poplars, and other species, and ensure that Mt. Washington continues to be one of the more stable and popular communities in the city of Baltimore. Did you know that:

- Landscaping can add up to 17% to the value of a home.
- Big trees save homeowners money on cooling costs.
- Violence tends to be lower in communities with trees.
- Trees allow many species of birds, insects, and butterflies to forage for food, nest, and raise young in our community.

Make sure that trees you purchase aren't invasive. (Norway maple, most barberries, and Bradford Pear are invasive species and should be avoided.). To find out more about invasive plants in our area, visit the Plant Invaders of the Mid-Atlantic area online at [www.nps.gov/plants/alien/pubs/midatlantic/toc.htm](http://www.nps.gov/plants/alien/pubs/midatlantic/toc.htm)

Local/State events where trees will be available for purchase:

**April 7, 2007** Maryland Natives Nursery ([www.americannativeplants.net](http://www.americannativeplants.net) - click on Retail link) Opening day-check website for other events. Excellent selection of tree species in sizes to accommodate any budget. MD Natives Nursery also delivers! Call 410-529-0552 or email [retailnativeplants@comcast.net](mailto:retailnativeplants@comcast.net) for more information.

**May 5, 2007** Baltimore Green Week EcoFest ([www.baltimoregreenweek.org](http://www.baltimoregreenweek.org))

Adkins Arboretum Native Plant Sale ([www.adkinsarboretum.org](http://www.adkinsarboretum.org))  
Adkins Arboretum is an excellent place to go and see showcase gardens done in plants indigenous to MD Coastal Plain.

**May** Cylburn Arboretum Market Day ([www.cylburnassociation.org](http://www.cylburnassociation.org))  
Check website for date, not posted at time of article submission.

**Mt. Washington Improvement Association Open Board Meeting  
February 20th at 7:30 p.m.**

# *Plant a Tree in your Yard this Year*

<b>Species</b>	<b>Height/Spread</b>	<b>Comments</b>
Red Maple	40'-70'/40'-50'	Fast grower. Tolerant of many soil types and wet conditions
River Birch	40'-70'/40'-60'	Fast grower, often multi-stemmed. Beautiful bark.
Common Hackberry	40'-60'/same	Medium to fast growth. Withstands city conditions. Popular with birds.
American Beech	50'-70'/same	Mt. Washington is one of the few places in Baltimore where this tree grows.
Tulip Poplar	70'-90'/30'-50'	Fast grower. Good tree for bird habitat.
Scarlet Oak	60'-75'/40'-60'	Fast grower. Excellent color in fall.
White Oak	100'/50'-80'	Slower grower. Important food source to wildlife. State tree of Maryland.
Pin Oak	60'-70'/25'-40'	Faster growing oak. Tolerates various conditions. Important food source to wildlife.
American Sweet Gum	60'-75'/2/3 of height	Hardy tree. Some folks don't like gumballs but finches like their winged seeds.
White Pine	50'-80'/20'-40'	Fast grower. Excellent for large lawns. Provides cover and nesting sites for birds.
Eastern Redbud	20'-30'/same	Fast grower. Beautiful purple/red blossoms. Excellent choice under power lines.
Flowering Dogwood	20'/15-20'	Beautiful foliage and berries, and flowers Excellent choice under power lines.
White Fringe tree	12'-20'/same	Lovely white flowers in late spring. Fragrant. Excellent choice under power lines.
Shadblow Serviceberry	25'-30'/15'-20'	Small tree with showy, 5-petaled lightly fragrant flowers. Tolerates variety of soils.
American Holly	15'-30'/18'-25'	One male for 3 females. Full sun or partial shade. Berries important for birds.
Winterberry Holly	6'-12'	Red berries in the fall. Likes damp sun.
Buttonbush	6'-12'	White, ball-like cluster flowers
Northern Bayberry	6'-12'	Waxy, grey fruit, fragrant leaves.
Fothergilla	Varies by Cultivar	White flowers in spring, bright red, orange and yellow in fall.
Viburnum dentatum	5'12'/5'-10'	White flowers in spring, blue berries in mid-summer to late fall. Great bird food.

---

## **Mt. Washington Arboretum**

Congratulations to Mike Sherlock and all the volunteers for winning third place in the restoration category of the Garden Crusader Awards. The award was given in recognition of the work done at the Mt. Washington Arboretum over the past five years. The Garden Crusader Awards were created by Gardener's Supply in 2001 to honor individuals who are improving the world through gardening. These enthusiastic men and women are planting trees and flowers, growing food, creating new green spaces, and teaching their friends and neighbors about the rewards of gardening.

Ann Raver, head garden writer for *The New York Times*, spoke at the Arboretum's conference held in late October. 40 people attended to hear about green roofs, rain barrels, and composting. The conference marked the completion of the Arboretum's new water storage tower (600 gallons using twelve old 50-gallon Pepsi barrels) with green roof and water features (aqueduct with waterfall).

Volunteers have been working on removal of trash trees and vines along Kelly Avenue near the Village and replacing with other plant materials, some donated by the City Parks department. Volunteers have also collected hundreds of bags of leaves throughout the neighborhood and placed them on the plantings to recycle. Compost your leaves, rather than discard. A composting how-to is on the Arboretum's website at [www.miniarboretum.org](http://www.miniarboretum.org) or contact Mike Sherlock at 410-215-9527.



# Thank You from MWES students!

Each year the MWIA makes a contribution to the Mt. Washington Elementary School (MWES) to purchase items not covered by the City budget. This year our \$2,000 gift bought a new play kitchen, complete with toy stoves, sinks, and utensils for the kindergarten classroom. We also helped the library acquire new books and magazines for all ages. The MWIA's annual contribution is one of the most important things we do and is one small reason that MWES ranks as one of the best in town.

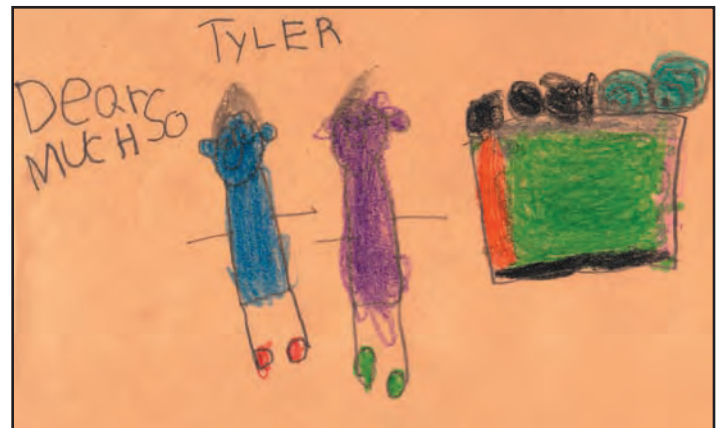
## Thank you notes from kindergarteners at MWES.



Andrew



Kennedi



Tyler

## MTA Bus Service between Mt. Washington and Roland Park Middle School to begin February 12th

MTA Bus Service between Mt. Washington and Roland Park Middle School to begin February 12th. Thank you to those who attended last month's meeting with MTA officials to discuss the need for better public transportation between the Mt. Washington neighborhood and Roland Park Elementary/Middle School (RPEMS). Over 40 parents and community members, as well as MWIA's president Mac Nachlas, Delegate Sandy Rosenberg, and Mt. Washington Elementary School Principal Tom Shepley were there to show their support. As a result of this meeting, the MTA will be providing the requested bus service beginning on February 12th.

The service will consist of one morning and one afternoon bus, which will be a supplemental M10. The morning bus, scheduled to arrive at RPEMS at 8:15, will stop at the Mt. Washington bus loop and then follow #27's bus route before heading to Roland Avenue. In the afternoon, the supplemental M10 bus will be waiting outside of school at 3:20 and will take students home along the #27's bus stops in Mt. Washington.

For more information, please contact Stephanie Regenold at 410.367.0133 or [ssregenold@yahoo.com](mailto:ssregenold@yahoo.com).

## New Faces at the Mt. Washington Elementary School

Principal Thomas Shepley says that the Mt. Washington Elementary School is fully staffed with the addition of a new vice principal, librarian, and social worker. Bridget Benzing, formerly a second grade teacher, has joined the administration as full-time Vice Principal. Melissa Da joined the staff as the school librarian. She brings great experience and contacts from her years at Enoch Pratt Children's Department. And finally, Sonya Sanders-Murray joined the staff as a social worker. All three women bring great energy and new ideas to a school that is growing and improving every day. The school is also celebrating the addition of a pre-kindergarten program this past fall. The pre-K is enthusiastically taught by Mrs. Nancy Schechman and Mrs. Sharon Pretlowe.

# MWES Outdoor Classroom Project

Plans to create an Outdoor Classroom on the aging asphalt lot at the elementary school continue to move forward. The new design of the space will provide new outdoor performance space and play possibilities for the neighborhood. New landscaping, tree planting, fence replacement, and other aesthetic improvements will beautify our neighborhood. Once completed, it will house the only outdoor group seating in the neighborhood, nicely situated by the Arboretum and Village.

The proposed renovations include the following additions:

- An archway entrance, decorated with student artwork
- Amphitheater in existing hillside
- Perennial garden beds
- Large cable climbing structure
- Shade and ornamental trees
- Paint assorted games on asphalt
- Paved labyrinth
- New signage and landscaping at Kelly & Lochlea
- New vinyl fence
- Resurfaced asphalt
- Drinking fountain
- \* Assorted games painted on asphalt

Fundraising began last summer with a goal of \$250,000. To date, approximately \$110,000 has been raised. This includes a \$25,000 capital grant from Mayor O'Malley's Neighborhoods First Capital Grant, which is a matching grant made possible by the generosity of the Mt. Washington community, neighborhoods First initiative. This is a matching grant and happened due to the generosity of the Mt. Washington community. School families, neighbors, community supporters, public officials, the Mount Washington PTO, and the MWIA have generously supported this fund drive. A spirited fundraiser in October at the local Whole Foods Market yielded over \$4,000. And Alex Brown & Sons Charitable Trust contributed \$10,000. Several additional grant applications have been submitted.

If you have already contributed to this exciting project, we thank you. If you have not, please consider a 100% tax-deductible donation that will strengthen our public

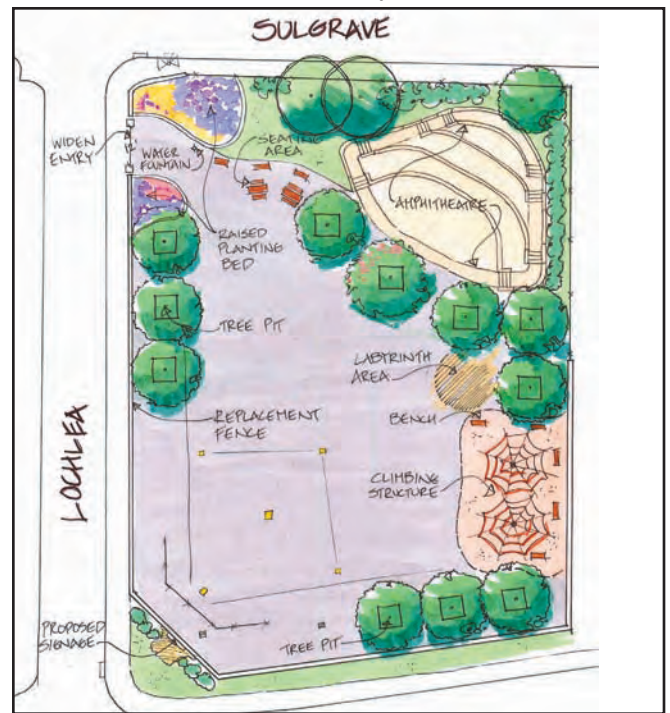
school and enhance the fabulous neighborhood that is Mt. Washington. The sooner we raise the money, the sooner we'll transform that aging asphalt lot into an attractive, useful space for our neighborhood.

Donations may be made with a check, via Paypal (click on grassy logo at mtwashingtonelementary.com) or in the form of stocks (email or call the number below for transfer instructions).

Donations can be mailed to:

Mt. Washington PTO/ Outdoor Classroom  
1801 Sulgrave Avenue, Baltimore, MD 21209

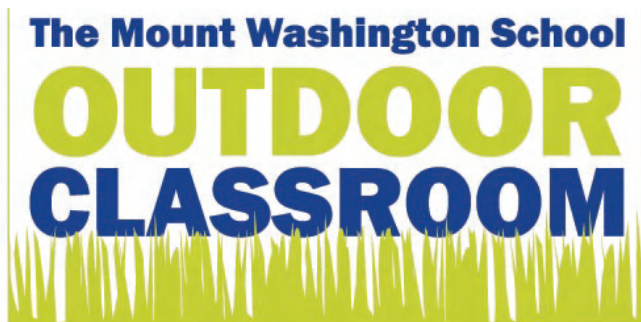
If you have questions or comments, please contact Becky Redett, 410-542-3999 or rredett@yahoo.com.



## Welcome New Neighbors

Do you know how Mt. Washington welcomes new neighbors? With wonderful Welcome Baskets complete with important information and delicious homemade baked goods. Sponsored by the MWIA and coordinated by Sally Staugatis, this is a wonderful and gracious introduction to the neighborhood.

If you are new to Mt. Washington, if you know of someone who is new to the neighborhood, if you are a business that wants to provide materials, or if you want to volunteer for this worthy effort, please contact Sally at 410-664-2212.



# Electric Choice and Alternate Suppliers

Some Mt. Washington neighbors have indicated interest in learning more about electric Choice, also called deregulation. Today, electricity (as well as natural gas) supply is deregulated. This means that you can choose to continue to get the supply portion of electricity (also called generation or commodity) from BGE or you can choose supply from an alternate supplier. If you comparison shop for various products and services, you may want to talk with some suppliers and compare their offerings to BGE's Standard Offer Service. You may be able to save money and/or receive other benefits such as longer price certainty or green power by using a non-BGE supplier. As of December, about 46,000 BGE customers (13,000 residential ones) used an alternative supplier.

The following points address some typical questions on choosing an alternate supplier:

- No matter from whom you get your supply, BGE delivers it to your home or business.
- To obtain supply from an alternate supplier, you need to contact it and the supplier sends your enrollment to BGE.
- Suppliers are licensed by the Maryland Public Service Commission and also must be qualified by BGE. In the unlikely situation a supplier fails, BGE continues to provide the electricity and your lights stay on. There may be a financial impact since you will then be paying the BGE Standard Offer Service (SOS) rates, which you are paying today if you have not switched.
- BGE does not charge you a fee to switch or return from a supplier (gas or electric). Read the supplier contract to see what fees the supplier may charge. Some do not charge any.
- No matter from whom you get your supply, you get the same service if there is a power outage.
- You receive the Rate Stabilization credit which was to keep the July BGE bill increase to 15% even when you are with an alternate supplier.
- To see what is best for you, contact a number of suppliers. Go to the following BGE-sponsored site for a list of suppliers actively seeking customers and links to their sites: [shopforelectricity.com](http://shopforelectricity.com). You also can go to the PSC website: [www.psc.state.md.us](http://www.psc.state.md.us), and see [www.bge.com](http://www.bge.com) for other Choice information, including a list of gas suppliers.
- In comparing prices, make sure you are comparing apples to apples. On your BGE bill, there is a "Price to Compare." This is the average annual price customers on your class of service pay for supply and transmission. It may not be exactly what you pay because your usage may not be average, but it is a starting point for comparisons. Make sure the quotes you get include both supply and transmission since the supplier provides the transmission (the transportation of electricity on the high voltage lines). To get these costs, you need to add the BGE distribution charges transmission since the supplier provides the

transmission (the transportation of electricity on the high voltage lines). To get these costs, you need to add the BGE distribution charges (charges to deliver power directly to your home) to calculate your total bill. Note that currently, residential SOS is based on a bidding process with the bid results becoming effective June 1 of each year.

*The author of this article, Ruth Kiselewich, is a BGE employee who, as Director of Special Projects and Supplier Services, is heavily involved in the electric Choice program. Feel free to contact her with any questions: 410-470-1361 or [ruth.c.kiselewich@bge.com](mailto:ruth.c.kiselewich@bge.com).*

## Luckman Park Cleanup a Success

It was a beautiful autumn day and over 20 hard-working adults and lots of kids joined the Friends of Luckman Park for the fall cleanup. The children enjoyed supervised play and snacks while parents spread mulch, dug new flower beds, and planted dozens of donated plants. In many cases, the kids worked alongside their parents. In addition to volunteering his time, neighbor Ed Grove donated his tractor and helped move 5 truckloads of mulch provided by Baltimore City Department of Recreation and Parks. We couldn't have asked for better turnout or a more beautiful day for the event. Friends of Luckman Park organizes two cleanup/ planting days every year, one in the spring and one in the fall. Watch for dates and times in the newsletter and on the listserv.

## Trees Tagged for Removal or Pruning

Last year the Friends of Luckman Park (FLP) was awarded a \$5,000 grant from Parks & People Foundation, a nonprofit organization that supports volunteer efforts in local parks. The grant was designated for major tree pruning. In October, Shea Lyda, Rus McLawhorn, and Kris Tebay, RLA (formerly of Mt. Washington) met with Baltimore City arborist Rebecca Feldberg and Matt Anacker of A & A Tree Experts to walk the park and determine which trees needed pruning or removal. Ms. Feldberg was enthusiastic about FLP efforts in the park and offered City services to remove any dead or dying trees so that A & A Tree Experts could focus on trimming and pruning. The City has begun removing dangerous trees and major pruning will begin in February.

## Act Local

Mayor Sheila Dixon  
410-396-3835  
[mayor@baltimorecity.gov](mailto:mayor@baltimorecity.gov)

Delegate Jill Carter  
410-841-3782  
[Jill\\_carter@house.state.md.us](mailto:Jill_carter@house.state.md.us)

Councilwoman Rikki Spector  
410-396-4819  
[rspector@baltimorecitycouncil.com](mailto:rspector@baltimorecitycouncil.com)

Delegate Nathaniel Oaks  
(410) 841-3283

Senator Lisa Gladden  
410-841-3697  
[Lisa\\_gladden@senate.state.md.us](mailto:Lisa_gladden@senate.state.md.us)

Delegate Sandy Rosenberg  
410-841-3297  
[Samuel\\_rosenberg@house.state.md.us](mailto:Samuel_rosenberg@house.state.md.us)

# Introducing Northwest Baltimore Park

A committee has been formed and is working diligently on a project that will shape a major neighborhood institution for the better part of the next century. That institution is the new Northwest Baltimore Park, formerly known as the UB Fields. The land was recently secured by the City in an innovative deal involving the University of Baltimore (UB) and the Wesley Home. The deal preserves as parkland the 48-acre parcel nestled between Rogers Avenue and Northern Parkway. The Mt. Washington Improvement Association (MWIA) played a pivotal role in steering UB away from plans to develop the property.

New urban parks are rare opportunities for residents and officials to express and preserve our priorities and clearly demonstrate what we value in our surroundings. In May of 1851, New York Mayor Ambrose Kingsley summed up his thoughts about the then new concept for Central Park: “The establishment of such a park would prove a lasting monument to the wisdom, sagacity, and forethought of its founders.”

But 21<sup>st</sup>-century Baltimore is not 19<sup>th</sup>-century New York. We face a maze of conflicting needs and wants. The park has a number of constituents, all with their own views as to what is important. And the park is under the control of a City Department with limited resources, creating another set of challenges.

What can you expect during this process? First, you can expect that your voice will be heard. The new Committee has already heard from a large number of neighbors, and Committee members are reaching out to hear from as many others as possible. This newsletter provides contact information for your MWIA Area Captains and other officers. Send your ideas to [president@MWIA.com](mailto:president@MWIA.com) or join one of the neighborhood email

lists. We enthusiastically encourage everyone to share ideas and to volunteer to be a part of this historic process.

You can also expect that Mt. Washington will **not** have the ultimate say in the future of the park. While our input will weigh heavily in any decisions, the park is a resource for the whole City, and other neighborhoods will be consulted. The Improvement Association believes that by getting off to a fast start and bringing in a lot of community input, we will be able to have a positive and primary role in the process.

One thing that you cannot expect: the status quo. We will see expansion of the Wesley Home as part of the financial deal, and changes to the park might include new traffic patterns and amenities. Some of the suggestions so far include walking trails, half-court basketball, baseball diamonds, a playground, picnic tables, a gazebo, a dog section, more soccer fields, a running track, gardens, and a public compost area. While all will be considered, not everything will make it into the final design.

In the meantime, part of this transition means that the University of Baltimore is no longer going to be doing any maintenance or cleaning in the park. We will need to be vigilant about keeping an eye on the park and reporting problems to the authorities. This also means cleaning up after ourselves and our pets.

A new park represents a tremendous opportunity to improve our quality of life and our property values. The Improvement Association is dedicated to ensuring that the development of the park is controlled, appropriate, and beneficial to the neighborhood. To do that, we will need your help. Please consider adding your voice and being a part of history.

---

The Mt. Washington Improvement Association dues are only \$25. Please join today.

Name \_\_\_\_\_

Address \_\_\_\_\_

Phone \_\_\_\_\_

Email address \_\_\_\_\_

I am interested in volunteering with MWIA

I am interested in joining the Mt. Washington listserv

Mail dues to:

Mt. Washington Improvement Association

P.O. Box 10404

Baltimore, MD 21209

# Recycling Calendar:

All recyclables will be picked up on the **second and fourth** Mondays and Tuesdays of each month, regardless of your regular trash collection days.

- Blue bag recyclables (glass, plastic, and cans) will be collected on the second and fourth Mondays of the month.
- Paper will be picked up on the second and fourth Tuesdays of each month.
- Holidays: There will be no pick-up until the next scheduled recycling day.

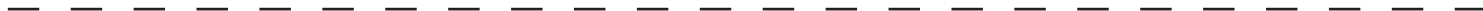
Monday, February 12	plastic/metal/glass
Tuesday, February 13	paper
Monday, February 26	plastic/metal/glass
Tuesday, February 27	paper
Monday, March 12	plastic/metal/glass
Tuesday, March 13	paper
Monday, March 26	plastic/metal/glass
Tuesday, March 27	paper
Monday April 9	plastic/metal/glass
Tuesday, April 10	paper
Monday, April 23	plastic/metal/glass
Tuesday, April 24	paper
Monday, May 8	plastic/metal/glass
Tuesday, May 14	paper
Monday, May 22	Holiday
Tuesday, May 28	paper

**Mixed Paper:** Place paper in paper bags, cardboard boxes, or bundles tied with string. May include newspaper, magazines, phone books, ad mail, and cardboard.

**Plastic/Metal/Glass:** Rinse bottles and cans and discard caps. Place in blue plastic bags. May include: glass jars and bottles (all colors), aluminum cans, tin cans, steel cans, plastic small mouth containers with #1 or #2, and empty aerosol cans. Styrofoam is not recyclable.

**Bulk Pick Up:** Call 311 or email DPW ([www.baltimorecity.gov](http://www.baltimorecity.gov), click on 311 services) three working days before scheduled pick up date. You may leave three items at your regular trash pick-up site. Bulk items include appliances, furniture, and up to four tires with rims removed. Do not leave building materials such as sheet rock, siding, wood pieces, or roofing.

Call 410-396-4515 for questions about solid waste. Call 410-396-4707 for concerns about illegal dumping.



PRESORTED  
 STANDARD  
 U.S. POSTAGE  
 PAID  
 BALTIMORE MD  
 PERMIT NO. 5621

Mount Washington Improvement Association  
 P.O. Box 10404  
 Baltimore, MD 21209  
 Dated Material- Please Deliver Promptly